

# DEVELOPMENT BOARD ENCLOSURES

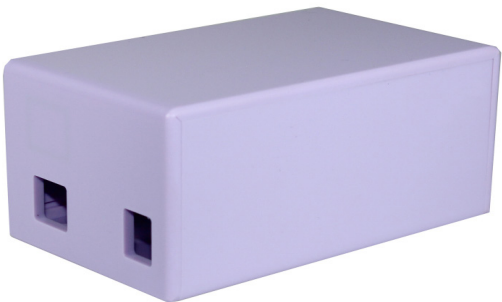
## Arduino Enclosures

### NO SCREWS! NO GLUE!

- Designed to house the Arduino Uno and Ethernet shield, via clip-in grooves - **NO SCREWS REQUIRED!**
- Knockout for Ethernet port\*
- All cut-outs are pre-cut into the case\* - **NO MODS REQUIRED!**
- Supplied with rubber feet
- Gloss finish

### Material:

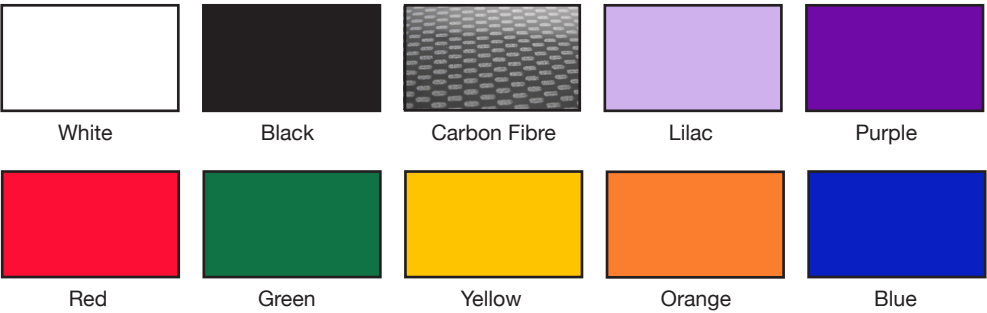
- Thickness 3mm: HB Rated
- Coloured materials: High Impact Polystyrene (HIPS)
- Carbon Fibre finish: Acrylic Capped ABS



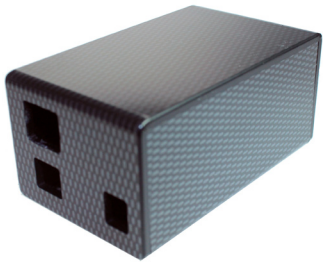
Arduino and Arduino Board not included



### Available in a range of colours: Gloss finish



CB PART NO.	ARDUINO UNO WITH ETHERNET SHIELD, TOP & BASE
CBARD-BLK	Enclosure, Arduino, Black
CBARD-BLU	Enclosure, Arduino, Blue
CBARD-GRN	Enclosure, Arduino, Green
CBARD-LIL	Enclosure, Arduino, Lilac
CBARD-ORG	Enclosure, Arduino, Orange
CBARD-PUR	Enclosure, Arduino, Purple
CBARD-RED	Enclosure, Arduino, Red
CBARD-WHT	Enclosure, Arduino, White
CBARD-YEL	Enclosure, Arduino, Yellow
CBARD-CAR	Enclosure, Arduino, Carbon fibre



\*Image showing Ethernet port knockout